



MONTHLY MEMBERSHIP PROGRESS REPORT

District 2 S1

Results as of: 6/30/2015

GMT: HAL GRIFFIN

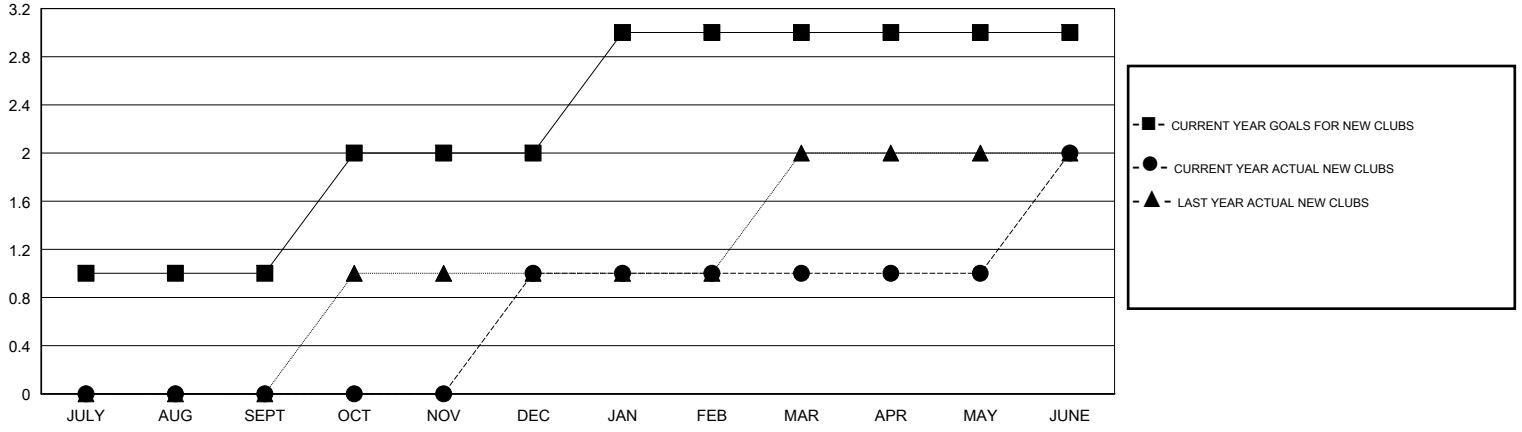
LOCATION TEXAS

GMT CA 1

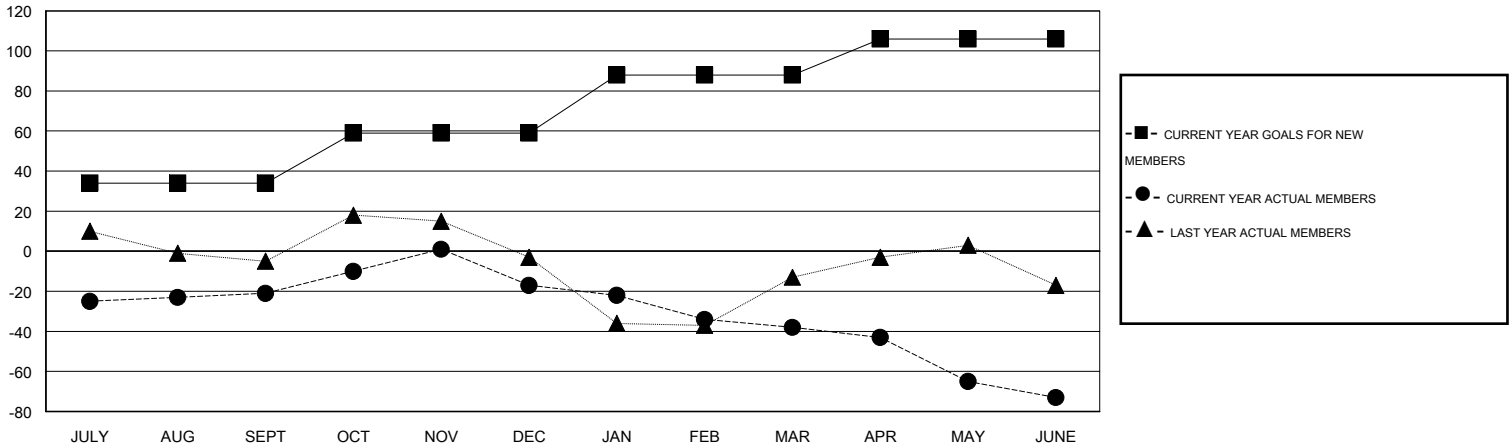
Clubs				
RESULTS FOR 2014-2015				
QUARTER	NEW CLUB GOAL	NEW CLUBS	DROPPED CLUBS	NET GAIN/LOSS
JULY/AUG/SEPT	1	0	1	-1
OCT/NOV/DEC	1	1	0	1
JAN/FEB/MAR	1	0	2	-2
APR/MAY/JUNE	0	1	1	0

Members				
RESULTS FOR 2014-2015				
QUARTER	NEW MEMBER GOAL	CHARTER AND NEW MEMBERS ADDED	DROPPED MEMBERS	NET GAIN/LOSS
JULY/AUG/SEPT	34	43	64	-21
OCT/NOV/DEC	25	90	86	4
JAN/FEB/MAR	29	57	78	-21
APR/MAY/JUNE	18	74	109	-35

GOALS AND ACTUAL NEW CLUBS CUMULATIVE



GOALS AND ACTUAL MEMBERS CUMULATIVE



DROPPED CLUBS: 4	
DROPPED MEMBERS	
DECEASED	19
CLUB CANCELLED	0
OTHER	318
TOTAL	337

38 CLUBS OF 57 ADDED 1 OR MORE NEW MEMBERS

GENDER DISTRIBUTION	
MALE	1,272 (74.26%)
FEMALE	441 (25.74%)

[CLICK HERE FOR HEALTH ASSESSMENT DATA](#)

FAMILY UNIT MEMBERS	232
HEAD OF HOUSEHOLD	114
NON-HEAD OF HOUSEHOLD	118